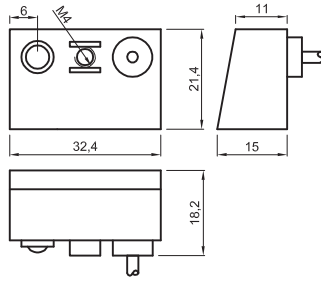
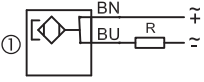


FBV



High switching power.
Long electrical life.
Body material: Polyamide

Alta potenza di commutazione.
Lunga vita elettrica.
Materiale del corpo: Poliammide




		electronic (magneto-resistance)	reed									
wiring diagram collegamento												
switching logic tipo contatto		-										
output uscita		① ① ① ① ①										
wires fili		2 2 2 2 2										
led colour colore led												
signal segnale		- yellow - yellow yellow										
supply alimentazione		-										
ratings dati elettrici												
ac [V]		3...250 3...250 3...250 3...250 3...130										
dc [V]		3...250 3...250 3...250 3...250 3...130										
voltage drop caduta tensione @10mA [V]		0,1 2,7 0,1 2,7 2,7										
max current corrente max [mA]		500 500 1000 300 300										
max power potenza max [W]		50 50 50 50 20										
protection protezione												
degree grado (IEC 60529)		IP67 IP67 IP67 IP67 IP67										
overcurrent transients transitori extracorrente		-										
overvoltage transients transitori extra tensione		● ● ● ● ●										
polarity reversal inversione polarità		● ● ● ● ●										
short circuit corto circuito		-										
corrosion resistance resistenza corrosione		3 3 3 3 3										
explosion esplosione (atex)		-										
welding disturbance disturbi da saldatura		-										
other data altri dati												
temperature temperatura [°C]		-20+70 -20+70 -20+70 -20+70 -20+70										
housing material materiale custodia		PA PA PA PA PA										
switching time commutazione [ms]		0,5 0,5 0,5 0,5 0,5										
on		0,1 0,1 0,1 0,1 0,1										
off		-										
circuit description descrizione circuito		100A00 110A0T 700C00 710C0T 810C6T										

cable cavo		4-6												A
material materiale	colour colore	max temp. temp. max	description descrizione											
pvc	ral 9005 black nero	90°	N107	F2091	F2092	F2093	F2094	F2095						
pvc	ral 9005 black nero	90°	N108	☹	☹	☹	☹	☹						
pvc CEI 20-22 II	ral 7035 grey grigio	90°	N111	☺	☺	☺	☺	☺						
pur	ral 9005 black nero	80°	C145	☹	☹	☹	☹	☹						
pur	ral 7001 grey grigio	80°	C144	☹	☹	☹	☹	☹						
armoured stainless steel armato inox		120°	S131	☺	☺	☺	☺	☺						

? choose your product in three easy steps
 scegli il tuo prodotto in tre comodi passaggi

A + B + C = F0000 00 3000
 (part number composition example | esempio composizione codice d'ordine)

connector type tipo connettore		B
no connector nessun connettore		00
		part number codice ordine

NOTE | NOTA

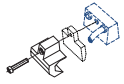

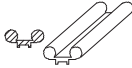




- preferred items
articoli preferenziali
 - not possible product
prodotto non possibile
 - page reference
pagina di riferimento
 - only on request
solo a richiesta
- BN = brown marrone BU = blue blu BK = black nero

cable length | lunghezza cavo (L)
 other special lengths available on request
 altre lunghezze speciali disponibili a richiesta

	C
3000 mm	3000
6000 mm	6000
10000 mm	MT10
15000 mm	MT15

clamps and brackets | fascette e staffe

accessories | accessori

 <p>FA 11</p>	 4-1				 <p>FA 01</p>  4-1
	  <p>rail binario</p>  <p>tie-rod tirante</p>				