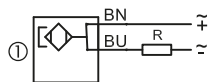
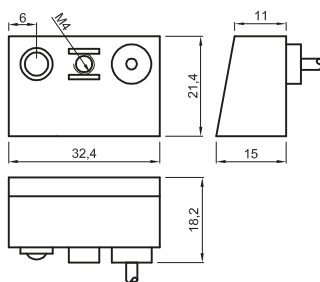


# FBV

High switching power.  
Long electrical life.  
Body material: Polyamide

Alta potenza di commutazione.  
Lunga vita elettrica.  
Materiale del corpo: Poliammide



		electronic (magneto-resistance)	reed											
<b>wiring diagram</b> collegamento														
<b>switching logic</b>   tipo contatto		-	-	-	-	-	-	-	-	-	-	-	-	-
<b>output</b>   uscita		-	-	-	-	-	①	①	①	①	①	-	-	-
<b>wires</b>   fili		-	-	-	-	-	2	2	2	2	2	-	-	-
<b>led colour</b> colore led														
<b>signal</b>   segnale		-	-	-	-	-	-	yellow	-	yellow	yellow	-	-	-
<b>supply</b>   alimentazione		-	-	-	-	-	-	-	-	-	-	-	-	-
<b>ratings</b> dati elettrici														
<b>ac</b> [V]		-	-	-	-	-	3...250	3...250	3...250	3...250	3...130	-	-	-
<b>dc</b> [V]		-	-	-	-	-	3...250	3...250	3...250	3...250	3...130	-	-	-
<b>voltage drop</b>   caduta tensione @10mA [V]		-	-	-	-	-	0,1	2,7	0,1	2,7	2,7	-	-	-
<b>max current</b>   corrente max [mA]		-	-	-	-	-	500	500	1000	300	300	-	-	-
<b>max power</b>   potenza max [W]		-	-	-	-	-	50	50	50	50	20	-	-	-
<b>protection</b> protezione														
<b>degree</b>   grado (IEC 60529)		-	-	-	-	-	IP67	IP67	IP67	IP67	IP67	-	-	-
<b>overcurrent transients</b>   transitori extracorrente		-	-	-	-	-	-	-	-	-	-	-	-	-
<b>overvoltage transients</b>   transitori extra tensione		-	-	-	-	-	-	●	-	●	●	-	-	-
<b>polarity reversal</b>   inversione polarità		-	-	-	-	-	●	●	●	●	●	-	-	-
<b>short circuit</b>   corto circuito		-	-	-	-	-	-	-	-	-	-	-	-	-
<b>corrosion resistance</b>   resistenza corrosione		-	-	-	-	-	3	3	3	3	3	-	-	-
<b>explosion</b>   esplosione (atex)		-	-	-	-	-	-	-	-	-	-	-	-	-
<b>welding disturbance</b>   disturbi da saldatura		-	-	-	-	-	-	-	-	-	-	-	-	-
<b>other data</b> altri dati														
<b>temperature</b>   temperatura [°C]		-	-	-	-	-	-20+70	-20+70	-20+70	-20+70	-20+70	-	-	-
<b>housing material</b>   materiale custodia		-	-	-	-	-	PA	PA	PA	PA	PA	-	-	-
<b>switching time</b>   commutazione [ms]														
<b>on</b>		-	-	-	-	-	0,5	0,5	0,5	0,5	0,5	-	-	-
<b>off</b>		-	-	-	-	-	0,1	0,1	0,1	0,1	0,1	-	-	-
<b>circuit description</b>   descrizione circuito		-	-	-	-	-	100A00	110A0T	700C00	710C0T	810C6T	-	-	-


A

cable cavo				part number   codice ordine						B				
material materiale	colour colore	max temp. temp. max.	4-6											
pvc	ral 9005	black nero	90°	-	-	-	-	-	-	K107A	K107A	K107A	K107A	K107A
pvc CEI 20-22 II	ral 7035	grey grigio	90°	-	-	-	-	-	-	X	X	X	X	X
pur	ral 9005	black nero	80°	-	-	-	-	-	-	X	X	X	X	X
pur	ral 7001	grey grigio	80°	-	-	-	-	-	-	K147E	K147E	K147E	K147E	K147E


**choose your product in three easy steps**  
? scegli il tuo prodotto in tre comodi passaggi

**FBV + A + B + C + D = FBV 100A00 K107A 0300 12**

(part number composition example | esempio composizione codice d'ordine)

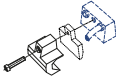



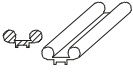

connector type   tipo connettore		<b>B</b>
no connector nessun connettore		<b>00</b>
		part number   codice ordine

**NOTE | NOTA**

- preferred items  
articoli preferenziali
  - ✗ not possible product  
prodotto non possibile
  -  page reference  
pagina di riferimento
- |                       |                  |                    |
|-----------------------|------------------|--------------------|
| BN = brown<br>marrone | BU = blue<br>blu | BK = black<br>nero |
|-----------------------|------------------|--------------------|

**cable length | lunghezza cavo (L)**  
other special lengths available on request  
altre lunghezze speciali disponibili a richiesta

	<b>C</b>
3000 mm	<b>3000</b>
6000 mm	<b>6000</b>
10000 mm	<b>MT10</b>
15000 mm	<b>MT15</b>

clamps and brackets   fascette e staffe				accessories   accessori	
	 <p><b>FA 11</b>  4-1</p> <p style="text-align: center;">↓</p>  <p>rail binario</p>  <p>tie-rod tirante</p>				 <p><b>FA 01</b>  4-1</p>